

Christofer Degrér & Rasmus R Streith
Idle Vacancy (Archaeopteryx), 2021
Site-specific installation
Celsiusgatan 45, Malmö, Sweden



Idle Vacancy (Archaeopteryx) was a site-specific installation presented on an unfrequented parking lot between Värnhem and Katrinelund in Malmö. A space amid boarded-up factory buildings and fenced-off empty lots. Except for the rare visit of an anonymous minivan or an off-duty taxi every once in a while, the lot holds out against a soon-to-be final erasure. It lies untended for in anticipation of a gentrification whose ubiquity and steadfastness seem almost procedurally generated.

Making contact with the parking lot were works which seek seamless entanglement with the many affects and plot fragments already in place. A 1986 Volvo 240 DL, chroma key-painted weeds, plaster replicas, prints, and a trash mound sculpture drift in and out of fictions culled from gothic literature and cinema.

Idle Vacancy (Archaeopteryx) is set to activate a threefold experience: that of a corrupted past, an incoherent present, and a dystopian future.

A temporal disjunction that sets in from the notion of the ruin, whose inherent relationship between history and nature is called into reconfiguration. The prospect of planetary destruction through climate change makes nature itself a ruin. An uncanny entanglement where the fossil-fueled car here goes on to denote a key complicity between a natural history of the earth and capitalism.



Installation view: Celsiusgatan 45, Malmö, Sweden
Photo: Niklas Lagström



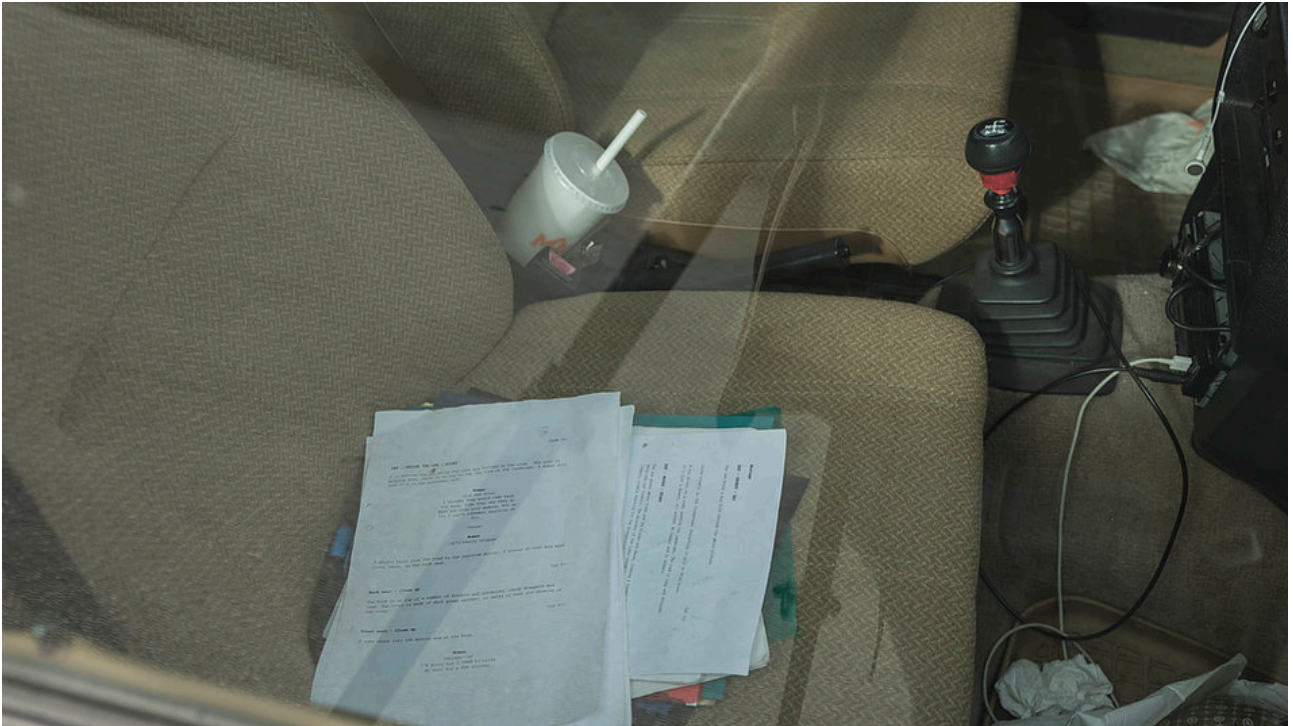
Installation view: 1986 Volvo 240 DL; plaster replicas
Photo: Niklas Lagström



Installation view (left to right): Chroma key-painted weeds; faux rock (ink and acrylic paint on cement and plaster-covered cardboard and chicken wire armature); 1986 Volvo 240 DL; plaster replicas
 Photo: Niklas Lagström



Detail, car interior: Broken mirror and clear resin within plastic bag
 Photo: Niklas Lagström



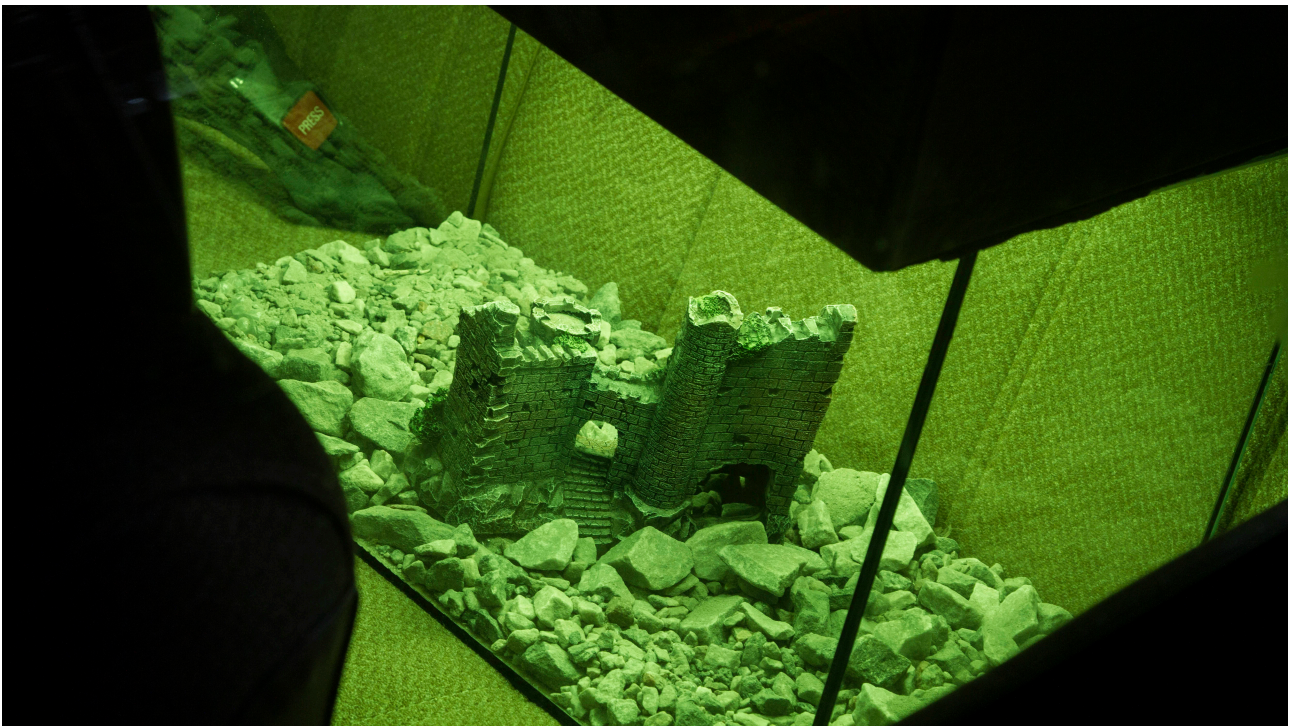
Detail, car interior (left to right): Fast food packaging; 57-page screenplay; plastic folders; broken headphones; USB cable
 Photo: Niklas Lagström



Detail, car interior: Aquarium (with gravel from a parking lot, green LED lights [off], and decorative castle ruin); cardboard box
 Photo: Niklas Lagström



Detail, car interior (night view): Aquarium (with gravel from a parking lot, green LED lights, decorative castle ruin); cardboard box
 Photo: Christofer Degrér



Detail, car interior (night view): Aquarium (with gravel from a parking lot, green LED lights, and decorative castle ruin); cardboard box
 Photo: Christofer Degrér



Detail: Plaster replica (jerrycan)
Photo: Niklas Lagström



Detail (left to right): Plaster replica (soda can); faux rock (ink and acrylic paint on cement and plaster-covered cardboard and chicken wire armature)
Photo: Niklas Lagström



Detail: Plaster replica (milk carton)
Photo: Niklas Lagström



Detail: Plaster replica (plank of wood)
Photo: Niklas Lagström



Detail: Chroma key-painted weeds
Photo: Niklas Lagström



Detail: Plaster replica (paper bag)
Photo: Niklas Lagström



Installation view (left to right): Chroma key-painted weeds; plaster replicas (planks of wood, milk carton, coffee lids, energy drink can, lighters, AA batteries); inkjet print on recycled paper
Photo: Niklas Lagström



Installation view (left to right): Chroma key-painted weeds; plaster replicas (planks of wood)
Photo: Niklas Lagström



Detail (left to right): Plaster replica (beer bottle); chroma key-painted weeds
 Photo: Niklas Lagström



Installation view (left to right): Plaster replicas; faux rocks (ink and acrylic paint on cement and plaster-covered cardboard and chicken wire armature); inkjet print on recycled paper; trash pile
 Photo: Niklas Lagström



Detail (left to right): Chroma key-painted weeds; plaster replicas; faux rocks (soda cans, energy drink cans, beer cans, takeaway coffee lids, skeletal remains from a dog, permanent markers)
Photo: Niklas Lagström



Detail (left to right): Chroma key-painted weeds; plaster replicas; inkjet print on recycled paper; trash pile
Photo: Niklas Lagström



Detail: Plaster replica (gardening glove)
Photo: Niklas Lagström



Detail: Plaster replicas (energy drink can, beer cans)
Photo: Niklas Lagström



Detail: Inkjet print on recycled paper
594 x 840 mm (A3x4)
Photo: Niklas Lagström



Detail: Inkjet print on recycled paper
297 x 420 mm (A3)
Photo: Niklas Lagström



Detail: Inkjet print on recycled paper
297 x 420 mm (A3)
Photo: Niklas Lagström



Detail: Inkjet print on recycled paper
297 x 420 mm (A3)
Photo: Niklas Lagström

Full list of materials:

1986 Volvo 240 DL

(interior: mirror shards and clear resin within plastic bag, 57-page screenplay, fast food packaging, plaster replica of a gothic novel, aquarium [with gravel from a parking lot, green LED lights, and decorative castle ruin], melatonin tablets, cardboard box, empty pack of cigarettes [Marlboro Gold, smoker's lung warning label motif], nicotine gum, broken light bulb within light bulb packaging, paper folders, broken headphones, coins [USD, EURO, SEK, DKK], rubber bands, napkins);

plaster replicas

(cigarette butts, milk carton, skeletal remains from a dog, rotisserie chicken thigh, boards, jerrycan, beer bottles, kombucha bottles, beer cans, beer bottles, soda cans, energy drink cans, juice boxes, screw hooks, permanent markers, AA batteries, AAA batteries, flashlight, drinking straws, paper bag, chew toys, gardening glove, pack of cigarettes);

faux rocks and boulders

(ink and acrylic paint on cement and plaster-covered cardboard and chicken wire armature);

chroma key-painted weeds

(black-bindweed [*Fallopia convolvulus*], broadleaf plantain [*Plantago major*], chickweed [*Stellaria media*], corn marigold [*Glebionis segetum*], field forget-me-not [*Myosotis arvensis* L], field milk thistle [*Sonchus arvensis*], field thistle [*Cirsium arvense*], fireweed [*Chamerion angustifolium*], giant hogweed [*Heracleum mantegazzianum*], goosefoot [*Chenopodium* L], ground elder [*Aegopodium podagraria*], groundsel [*Senecio vulgaris*], shaggy soldier [*Galinsoga quadriradiata*], slender meadow foxtail [*Alopecurus myosuroides*], sticky ragwort [*Senecio viscosus*], stinging nettle [*Urtica dioica*], treacle-mustard [*Erysimum cheiranthoides*], wall lettuce [*Lactuca muralis*], yarrow (*Achillea millefolium* L));

trash pile

(cardboard, glass jars, paper and plastic packaging, shopping cart, wooden pallet, car bumper, plywood, tarp, trash bags, car tire, silicone face masks);

inkjet prints on recycled paper

(297 x 420 mm [A3]);

chroma key-painted gag ball;

graffiti, empty sheds, cut and/or broken fences, flagpole, alive and dead trees (small-leaved linden [*Tilia cordata*], moor birch [*Betula pubescens*]), alive and dead insects (houseflies [*Musca domestica*], rough woodlouse [*Porcellio scaber*], common woodlouse [*Oniscus asellus*], potato bug [*Armadillidium vulgare*], earthworm [*Lumbricus terrestris*]), freight train, rust, debris, dust, downfall, feathers from common wood pigeons (*Columba palumbus*), weeds: (black-bindweed [*Fallopia convolvulus*], broadleaf plantain [*Plantago major*], chickweed [*Stellaria media*], corn marigold [*Glebionis segetum*], field forget-me-not [*Myosotis arvensis* L], field milk thistle [*Sonchus arvensis*], field thistle [*Cirsium arvense*], fireweed [*Chamerion angustifolium*], giant hogweed [*Heracleum mantegazzianum*], goosefoot [*Chenopodium* L], ground elder [*Aegopodium podagraria*], groundsel [*Senecio vulgaris*], shaggy soldier [*Galinsoga quadriradiata*], slender meadow foxtail [*Alopecurus myosuroides*], sticky ragwort [*Senecio viscosus*], stinging nettle [*Urtica dioica*], treacle-mustard [*Erysimum cheiranthoides*], wall lettuce [*Lactuca muralis*], and yarrow (*Achillea millefolium* L)];

other parts

(miscellaneous circumstances, conditions, objects and subjects)